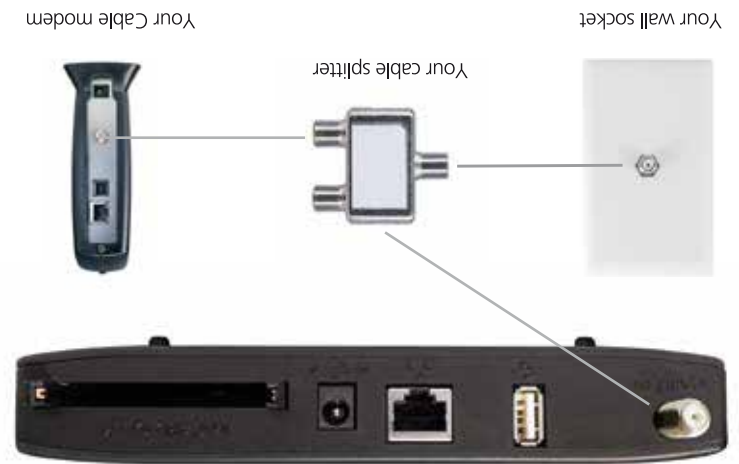




Connect Cat5e network cable between your **HDHomeRun PRIME** and your router or a spare port on your Cable modem

Step 2



Connect coax cable between your wall socket and your **HDHomeRun PRIME**. Then connect your cable modem to your splitter via coax cable

Step 1

Compare our DVR service

Our App, simply called HDHomeRun, allows you to watch live TV, and incorporates our patented electronic program guide (EPG) called Slice view™.

For a small subscription fee you can upgrade to the full DVR service which allows you to schedule, pause, record and rewind live TV. Some the features and benefits of this great new service are detailed below.

HDHomeRun app features	FREE app	Annual Subscription
Watch Live TV	•	•
Full access to all receivable channels in your local area	•	•
Watch Live TV on multiple devices simultaneously	•	•
Electronic Program Guide (Slice view™)	24hrs	14 days
Program image posters and synopsis	•	•
Schedule and Record Live TV		
Pause and rewind Live TV		•
Watch Live TV and record another channel simultaneously		•
Search for programs by category		•
Record entire series		•
Pause on one device and resume watching on another		•
Follow your favorite team		•
Set to record the entire season		•
COST	FREE	\$35/year



Quickstart Guide

Works with HDHomeRun DVR service*



Watch and record live TV. Your way.

*Requires Guide Subscription.
For details visit www.HDHomeRun.com



This device complies with part 15 of the FCC Rules. Operation is subject to the following two conditions: (1) This device may not cause harmful interference, and (2) this device must accept any interference received, including interference that may cause undesired operation.

SiliconDust

www.hdhome-run.com

© 2017 SiliconDust USA, Inc. - All Rights Reserved.

Step 3

Insert the M-CARD obtained from your cable provider



Optional SDV

If your provider uses SDV, connect the tuning adapter to the USB port on the HDHomeRun PRIME and the cable line

USB is not for use with external hard drive or other devices.



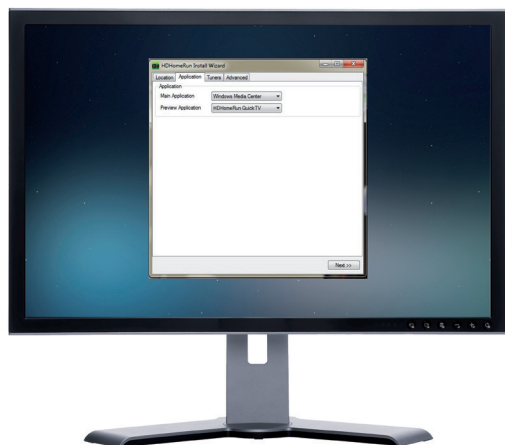
Step 4

Connect the power adapter to the **HDHomeRun PRIME** and an outlet



Step 5

Go to My.HDHomeRun.com and follow instructions for setting up your HDHomeRun PRIME and follow the Set Up Wizard



Step 6

Contact your cable provider to set-up the CableCARD. Enjoy watching across the largest number of Media devices and software programs of any other product

